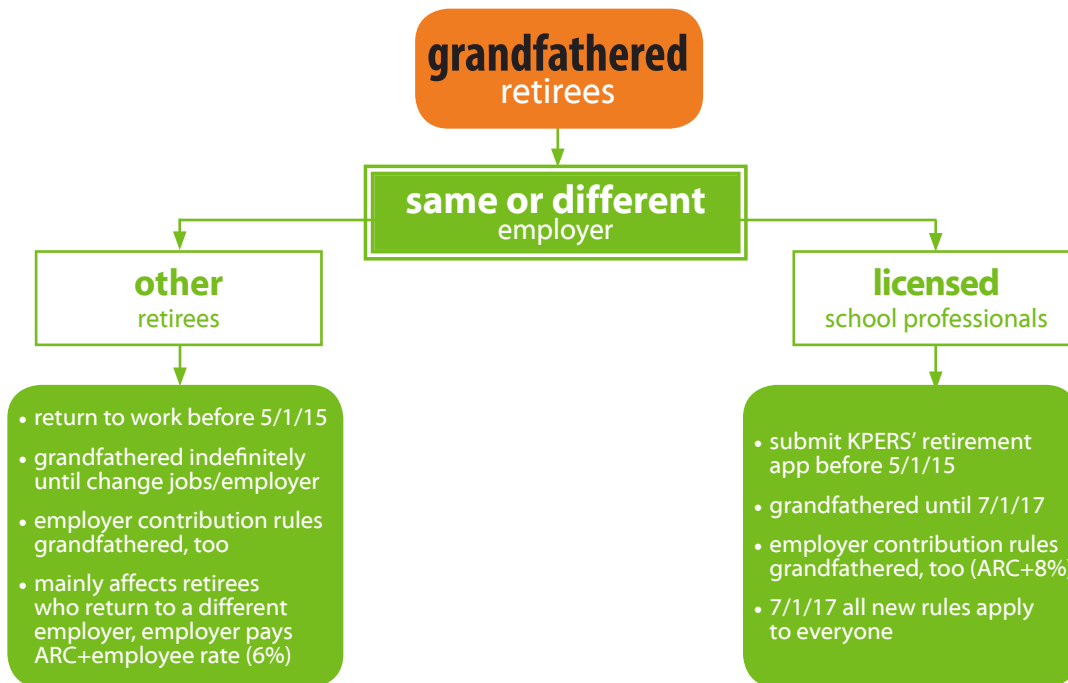
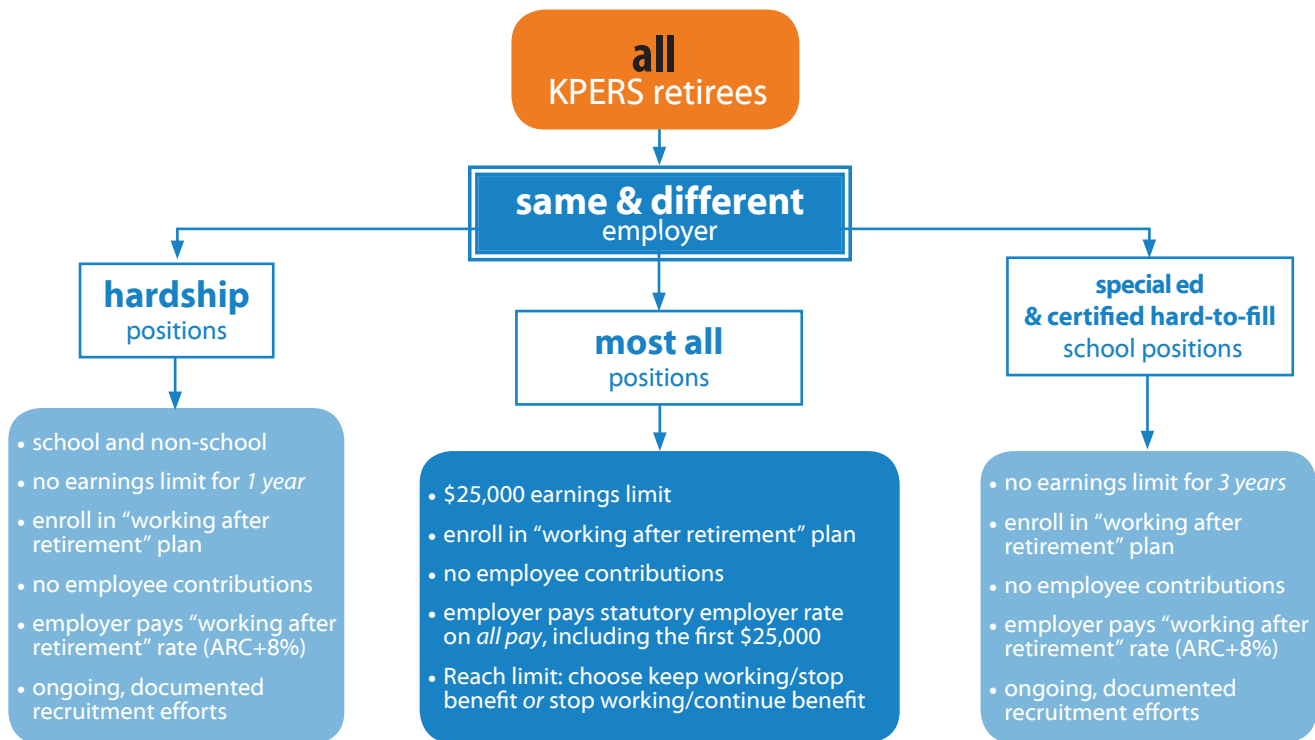


Working After Retirement Flowchart

Based on Working After Retirement Policy Group Proposal



Good to Know

1. ARC rate means actuarially required contribution rate.
2. No earnings limit for state hospital nurses. Employer pays ARC+employee rate (6%).
3. No earnings limit for law enforcement officers employed by the Law Enforcement Training Center. Employer pays ARC+employee rate (6%)
4. Employers can appeal for a one-year exemption extension.